

Installation

Step 1



Surface Preparation

After finishing operations are completed, when avoiding premature drying or cracking is a concern, spray or fog water around the area to be wet cured. Care should be exercised as to not mar the surface of the fresh concrete when adequate curing water is applied. Blanket application should always follow local or state prescribed methods for installation. Care needs to be taken to avoid thermal shock or excessively steep thermal gradient while using cold curing water.

Installation

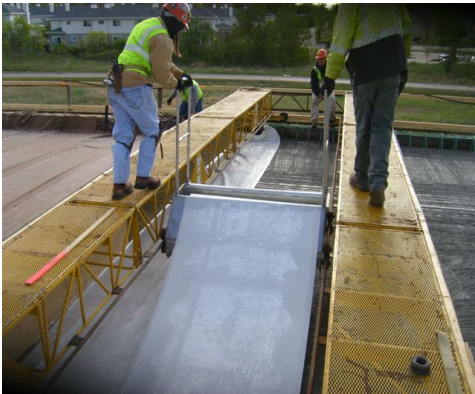
Overnight soaking of the concrete curing blanket is permissible, if required by local procedures, although not necessary to achieve full moisture retention.

Roll out or place the UltraCure DOT™ curing blanket on the wet concrete surface absorbent side down. Roll out the UltraCure DOT™ blanket in a straight line while continuously feeding water to the leading edge to assure saturation. Should the roll become out of line, cut the blanket straight across, overlap the edges and continue installation. If conditions prevent saturation of the blanket as it is rolled out, continue saturation by:

A.) Applying water through the top perforations until blanket is fully saturated.

B.) As an option to saturating the blanket from the top side, and after concrete has hardened sufficiently, place a water hose under the blanket at the high point of the pour and continue wetting until blanket is fully saturated.

Installation



Alternate Wetting Option:

Another option for wetting the blanket is to use a wetting trough with the walk bridge. The UltraCure DOT roll is presoaked in the trough, then the blanket is pulled out evenly across the concrete surface and installed. The walk bridge then moves down and the next area is covered in the same manor.

This option allows the contractor to pre-wet the rolls and apply the curing blanket with less chance of marring the surface of the concrete. Troughs can be 4 feet (up to 8 feet) wide.

HPC Deck or Columns

It is recommended that fogging or misting of the surface be undertaken immediately for HPC deck or columns, and that the UltraCure DOT blanket be installed after adequate surface moisture is present.

Recommended Installation

Equipment:

1. Curing water supply should be obtained from a hydrant or water truck. Water should not be cooler than 25 degrees (F) cooler than the concrete surface to avoid thermal shock.
2. A 2" adjustable nozzle hose or larger should be used. Smaller volume hoses will not wet curing blanket fast enough or effeciently.
3. Soaker hoses are recommended during high evaporation periods (high winds, low humidity etc.)

Installation

Step 3:



Step 4:



Edges and Ends:

At exposed edges and ends, lap blanket over curbs and existing pavements to prevent moisture migration beyond the curing area. Blanket application should follow local or state prescribed methods for installation.

Overlap 4" to 6"

After first roll has been placed, line up the next roll and overlap the edges of the first roll by 4"-6" and continue installation.

Repeat Steps 2 through 4

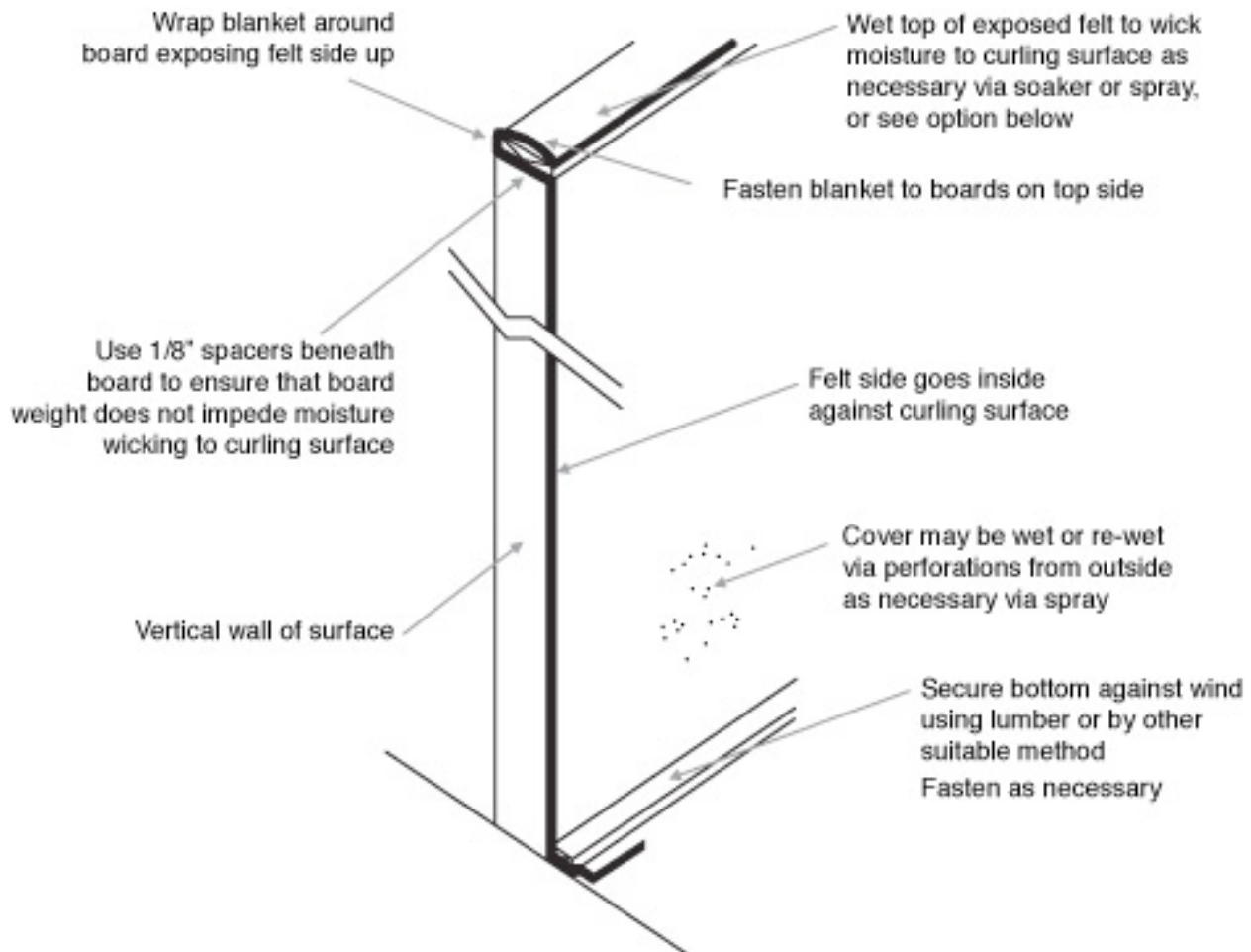
Repeat steps two through four until entire surface to be wet cured is covered with saturated curing blankets. Monitor moisture retention in blankets periodically for wetness. If high wind conditions are possible during the curing cycle, take precautions to secure blankets.

Blanket Removal

Remove the UltraCure DOT curing blankets after the specified curing period.

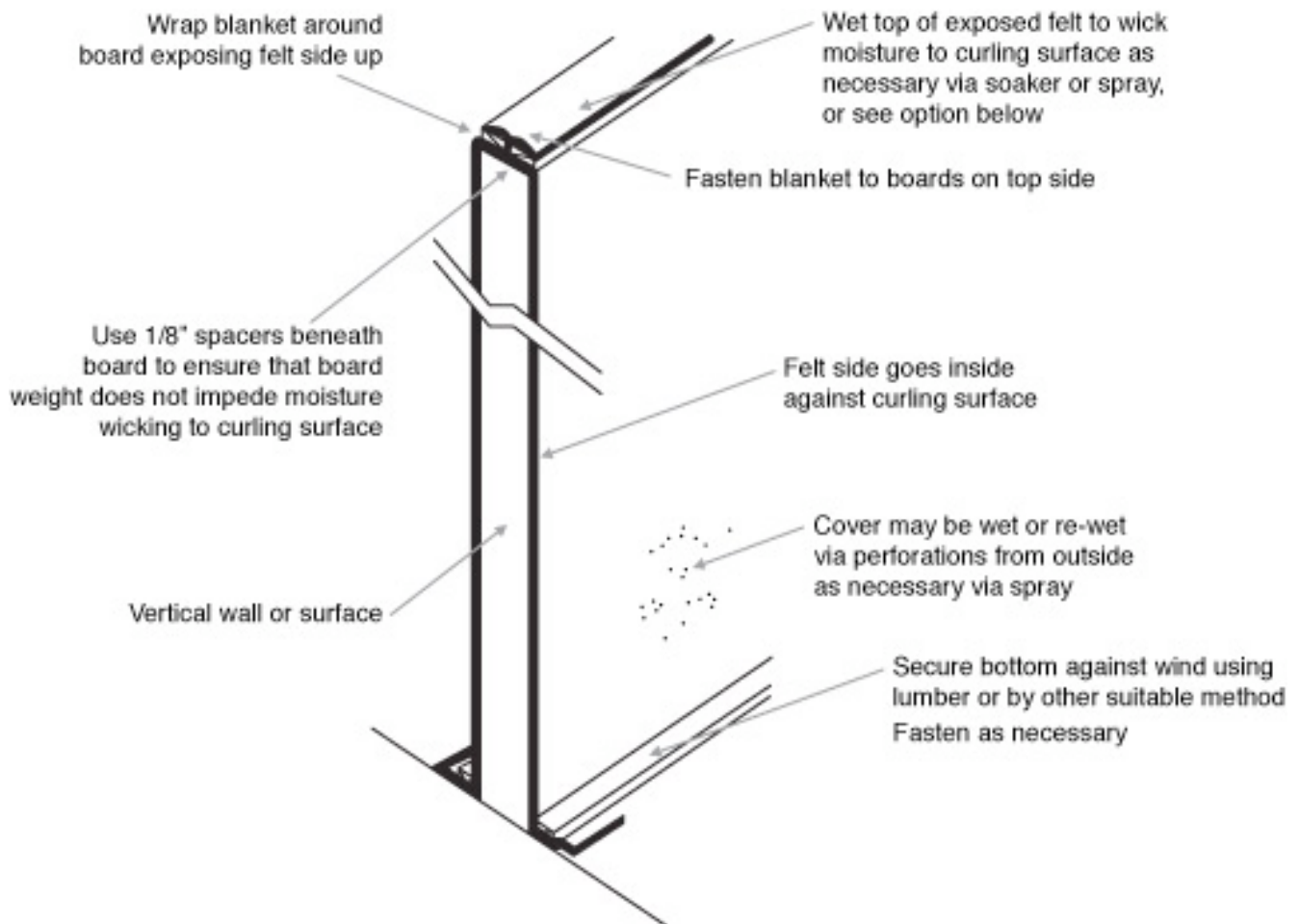
Installation

Vertical Applications: One Sided Wall



Installation

Vertical Applications: Two Sided Wall



Installation

Vertical Applications: Jersey Wall

