

EZ Saw™

New to Existing Dowel Installation System



Specifications and Technical Guide

**McTech
Group**

Custom Mounting Bracket :



Custom designed & machined mounting bracket.



Adjustable legs for leveling frame on slab. Saw must be level and parallel to slab surface to operate correctly.



Slab height adjustment move up or down for different slab thicknesses.



Carriage bracket holds saw level and in correct parallel alignment with the top of the slab.



Levels allow the leg height to be adjusted to maintain the saw in parallel position with the top of the slab, to ensure slots are cut correctly.

Concrete Saw Type: Husqvarna K3000 or equal specs

Husqvarna K 3000 Electric



Husqvarna K 3000 Wet.



Applications.

- For cutting indoors and outdoors.
- Ideal for quick and easy cutting of building block, pipe, reinforcement bar, supports, etc.
- Easily adjusts between cutting different materials.

Benefits.

- One of the market's most powerful and versatile electric power cutters.
- Considerable distance between handles for safe control and reduced load.
- Elgard, the advanced electronic overload protection system, varies the rotation speed to warn of an approaching overload.
- Electronic Softstart provides starting with normal, slow-acting fuses.
- Quick-locking of the spindle and a large outlet in the blade guard simplifies blade changes.
- Generously dimensioned miter gear provides high durability, minimal power loss and low noise levels.

Technical specifications K 3000 Electric

Motor	Electric 120 V
Rated output	20 amp
Blade diameter, in (mm)	12/14 (300/350)
Depth of cut, in (mm)	4/5 (100/127)
Power, hp	2.7
Max RPM (no load)	4,500
Max weight, lbs (kg)	20.7 (8.9)

More technical specifications on page 144.

Technical specifications K 3000 Wet.

Motor	Electric 120 V
Rated output	20 amp
Blade diameter, in (mm)	14 (350)
Depth of cut, in (mm)	5 (127)
Power, hp	2.7
Max RPM (no load)	4,500
Weight, incl. cable and blades, lbs (kg)	21.8 (9.9)

More technical specifications on page 144.

Product specifications.

	E
968375401, K 3000 Electric, 12"	\$749.00
968376401, K 3000 Electric, 14"	799.00
968378401, K 3000 Electric Wet, 14"	839.00



Elgard, the advanced electronic overload protection system, varies the rotation speed to warn of an approaching overload.



DEX, the new dust-handling system, provides cleaner cutting with less water usage.



Considerable distance between handles for safe control and reduced load.

Accessories

P

A K3000 transport box	506310002	\$189
------------------------------	-----------	-------

Spare parts

P

Cord assembly with plug, GFI (K3000 Wet)	510181302	\$259.75
Cord assembly with plug	505530356	\$4.03
Cord protection at handle	544900501	\$6.77
Edgard circuit protection (110/120)	531031881	\$1.06
Trigger switch	531031883	\$0.17
Carbon brush	506225802	\$1.51
Combination wrench	501091702	\$6.80



K3000 transport box.



Diamond blades

MATERIAL	HIS	CHS	EHS	LHB	LHS	VHS	DHT5	DHT3	STE3	BARRACUDA	T-DM	FR3
CERAMIC TILES	●	●	○	—	○	○	—	●	●	●	●	—
GRANITE	●	●	○	—	○	○	○	●	●	●	●	—
MARBLE	●	●	○	—	○	○	○	●	●	●	●	—
CURED CONCRETE	●	●	●	○	●	●	●	●	●	●	○	○
REINFORCED CONCRETE	●	●	●	—	○	○	●	●	●	●	○	○
BRICK	●	●	●	○	●	●	●	●	●	●	—	○
ROOF TILE, CLAY	●	●	○	○	○	○	●	○	○	○	—	—
ABRASIVE MATERIAL / BLOCK	○	○	—	●	○	○	○	—	—	—	—	—
GREEN CONCRETE	—	—	—	○	—	—	○	—	—	○	—	—
ASPHALT	—	—	—	○	—	—	—	—	—	—	—	—
STEEL BAR	—	—	—	—	—	—	—	—	—	—	—	●
DUCTILE IRON	—	—	—	—	—	—	—	—	—	—	—	●
Read more on page	148	148	142	142	149	150	150	150	150	151	151	152

● = Optimal ● = Good ○ = Acceptable — = Not recommended

TECHNICAL DATA

Technical data	K3000	K3000 Wet
Engine		
Protection class	I	I
Ground fault circuit interrupter	No	Yes
Rated voltage, V		
Europe	230	230
Great Britain	110	110
USA / Canada / Japan	100-120	100-120
Australia	230	230
Rated output, W		
Europe	2700/12 A	2700/12 A
Great Britain	2200/20 A	2200/20 A
USA / Canada / Japan	15 A, 50-60 Hz	15 A, 50-60 Hz
Australia	2300/10 A	2300/10 A
Weight		
Power cutter without cutting blade, kg	8,8	8,9
Sound levels		
Noise pressure level at the operators ear, max speed, measured according to EN ISO 11201, dB (A)	95	95
Noise power level, max. speed, measured according to EN ISO 3744, dB (A)	108	108
Vibration levels		
(see note 1)		
Front handle, m/s ²	1,7	1,7
Rear handle, m/s ²	3,8	3,8
Water cooling		
Water cooling of blade	No	Yes
Connecting nipple	Type "Gardena"	Type "Gardena"
Water pressure - max, bar	-	8

Note 1: Handle vibrations are measured according to ISO 8662-4

Cutting equipment

Cutting blade, mm/inches	Max. peripheral speed, m/s
300/12	80
350/14	100

Max. blade speed, rpm

4500

DIAMOND SAW BLADE SPECIFICATIONS

12" x .250 SUPER PRO CURED CONCRETE BLADE

A.	DIAMOND CONCENTRATION (%)	APPROX 39%
B.	GRAIN SIZE	APPROX 30/40 (US MESH)
C.	DIAMOND DEPTH OF SEGMENTS FULLY IMPREGNATED	.400"
D.	WIDTH OF SEGMENTS	.250"
E.	HEIGHT OF SEGMENTS	.400"
F.	LENGTH OF SEGMENTS	2"
G.	SPACE (GAP) BETWEEN SEGMENT	.125
H.	WIDTH OF WATER SLOT (GULLET)	.125
I.	NUMBER OF SEGMENTS	16
J.	GRADE (FOR BOND)	CO/W
K.	SEGMENTS LASER WELDED	
L.	TYPE OF DIAMOND	DEBEERS DIAMONDS
M.	MAXIMUM ALLOWABLE RPM	6000

Diamond Blade Vendor:



PATRIOT DIAMOND, INC.

Manufacturing Locally and Partnerships Worldwide

CALIFORNIA * FLORIDA * MASSACHUSETTS

CORPORATE 800-366-0421 * FAX 800-548-0421 * LOCAL 954-563-8294

Visit our Website at: www.DiamondBlade.com

Complete EZ Saw™ Kit:



EZ Saw™ – Mounting Bracket



Concrete Saw



Cured Concrete Blade



Complete Kit -
Assembled

Accessories needed:



Contractor Grade Shop-Vac

Performance Specifications

Gallons	12	
Peak Horsepower		5.5 Peak HP
Cubic Feet Per Minute (CFM) of Air Flow	195	
Sealed Pressure (in inches)	59	
Electrical Ratings	120V 60Hz 11.5Amps	
Peak Air Watts	345	



Contractor Grade Generator

Performance Specifications

Low oil shutoff for engine protection
Rated Watts: 7000; Surge Watts: 7500
Recoil and Electric Start; BATTERY NOT INCLUDED but is easily obtained wherever Small Motor (Tractor, Lawn Mower) batteries are sold
Premium Control Panel
Four 120VAC UL Duplex Receptacles-NEMA # 5-20R/20AMP
One 120/240VAC UL 4 Prong Twist Lock Receptacle-NEMA # L14-30R/30AMP
Hours meter shows running time to gauge oil change frequency
Volt Meter—To monitor voltage output
14HP OHV Engine provides Wider Power Band, More Efficient, Smoother Performance, Better Fuel Efficiency, Lower Emissions and Quieter Operation
Rated Watts: 7000; Surge Watts: 7500
Push 12V DC Circuit Breaker Reset to Protect Electric Start Circuit
DC Output Receptacle with 8' Charging Cables with in-line Fuse Link Protection
MFG Brand Name : MultiPower
MFG Model # : MP7500E
MFG Part # : MP7500E

DUST CONTROL WHEN USING CONCRETE CUTTING SAWS

Hand-held saws are used in the construction industry to cut or shape paving slabs, curbs, stones or other concrete products. The cutting action generates high levels of respirable dust which often contains high respirable crystalline silica content. Breathing in this dust can lead to the development of respiratory ill health, in particular scarring of the lung tissue (silicosis) which can result in serious breathing difficulties, depending on the extent of exposure.

Legal Requirements

There are workplace legal requirements (COSHH Regulations 2002) to prevent exposure to crystalline silica dust or, where prevention is not reasonably practicable, adhere to the reduced Workplace Exposure Limits (WEL's). Control should be achieved by measures other than Respiratory Protective Equipment (RPE) so far as is reasonably practicable. The most effective engineering measures involve capturing or controlling the dust at source.

There are also environmental legislation requirements (The Environmental Protection Act 1990) to prevent nuisance contamination or injurious effects. The legislation requires dust emissions to be controlled by best practicable means.

Personal Protective Equipment

- Cutting concrete products containing high silica concentrations may require suitable RPE to be provided.
- Emptying the vacuum cleaner will require the provision of a suitable dust mask.

OSHA – Concrete Safety

http://www.osha.gov/Publications/3221_Concrete.pdf

A McTech Group Inc. Instruction Manual



**3502 Diversified Drive
Loganville, Georgia 30052
800-913-8363
770-913-8363
www.McTechGroup.com**

EZ Saw Manual

Instruction and Use

*By Rick Jordan
Mike Carroll
Travis Pedlar*

EZ Saw Instruction Manual

McTech Groups dowel slot cutter is designed to aid in perfectly aligning dowel slots where the EZ dowels are inserted across the construction joint when joining new slabs to existing ones. By using the EZ Saw dowel slot cutter and EZ Dowels, doweling can be achieved with minimal effort and still provide proper dowel alignment.



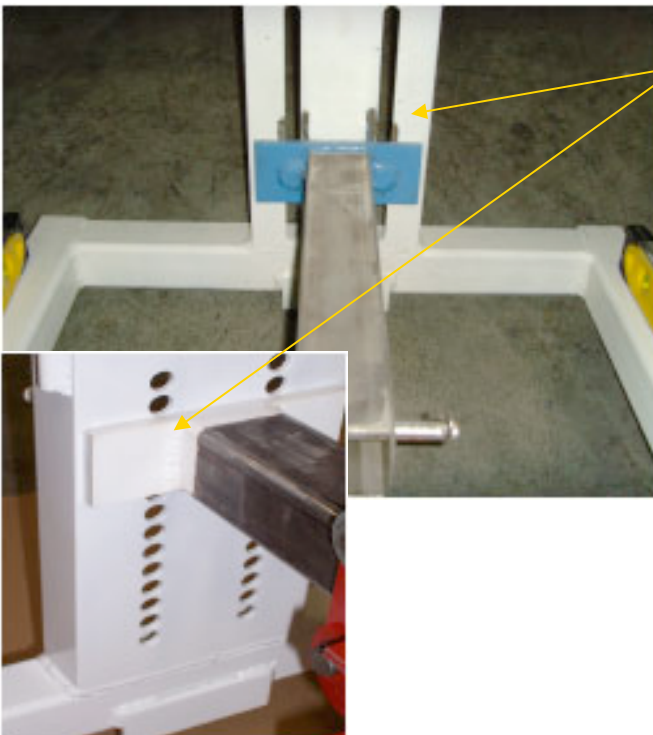
Installation Instructions

Step 1:



Measure the depth of slab to center.

Step 2:



Adjust height of saw bracket.

Loosen the bracket and move bracket to desired height via slots or holes depending on model. Retighten the bracket.

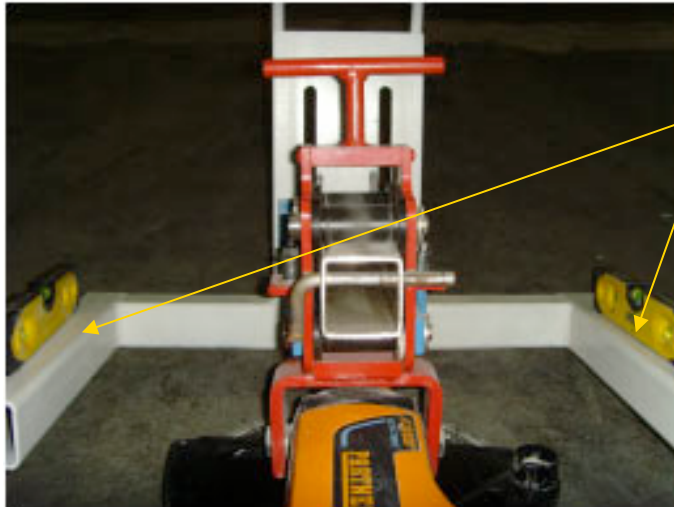
Slot model- make sure bracket is level.

Step 3:



Remove locking pin and slide saw onto mounting guide. Replace locking pin.

Step 4:



Place the 2 magnetic levels on the frame- one on each side. These will be used to level the saw to parallel with top of the slab.

Step 5:



Position saw on top of slab with the guide plate flush against the side of the slab to be cut.

Inspect the protective pad on bottom side of saw bracket, this will help prevent scratching of concrete floor surface by the saw bracket.

Step 6:



Level saw to parallel position with top of the slab.

Using the 2 handles adjust the saw up or down, so that both levels on each side read level.

Step 7:



Plug saw into an outlet or generator for power. Generator needs at least one 30 amp receptacle.

Step 8:

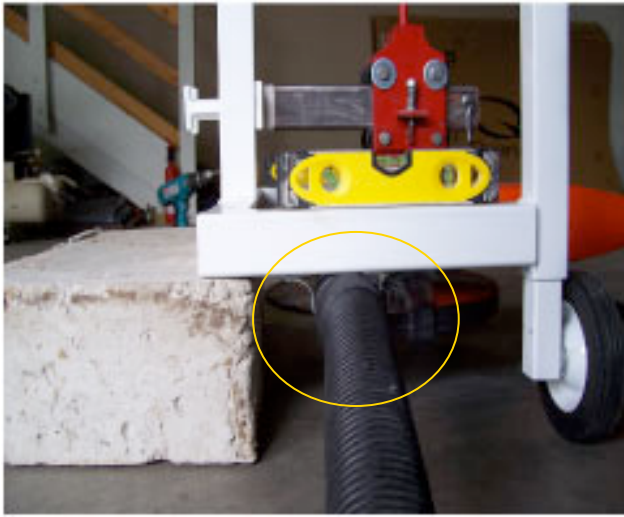


Place one hand on the red T-handle, the other hand is used to operate the saw. Depress the trigger and slowly push saw forward. Push saw into the slab until it reaches desired depth.

Back saw out. The slot is done.

When engaging saw into the slab, ensure the saw and slot are parallel with the slab surface.

Step 9:



Connect the end of the vacuum hose into the clamp underneath the frame on the left side.

Step 10:



Insert EZ Dowel into the center of the freshly cut slot. Epoxy may also be used to secure dowel into place.

Step 11:

Repeat this procedure until all dowels have been installed.

DUST CONTROL WHEN USING CONCRETE CUTTING SAWS

Hand-held saws are used in the construction industry to cut or shape paving slabs, curbs, stones or other concrete products. The cutting action generates high levels of respirable dust which often contains high respirable crystalline silica content. Breathing in this dust can lead to the development of respiratory ill health, in particular scarring of the lung tissue (silicosis) which can result in serious breathing difficulties, depending on the extent of exposure.

* Also refer to owners specifications for dust control measures near occupied areas.

Legal Requirements

There are workplace legal requirements (COSHH Regulations 2002) to prevent exposure to crystalline silica dust or, where prevention is not reasonably practicable, adhere to the reduced Workplace Exposure Limits (WEL's). Control should be achieved by measures other than Respiratory Protective Equipment (RPE) so far as is reasonably practicable. The most effective engineering measures involve capturing or controlling the dust at source.

There are also environmental legislation requirements (The Environmental Protection Act 1990) to prevent nuisance contamination or injurious effects. The legislation requires dust emissions to be controlled by best practicable means.

Personal Protective Equipment

- Cutting concrete products containing high silica concentrations may require suitable RPE to be provided.
- Emptying the vacuum cleaner will require the provision of a suitable dust mask.

OSHA – Concrete Safety

http://www.osha.gov/Publications/3221_Concrete.pdf