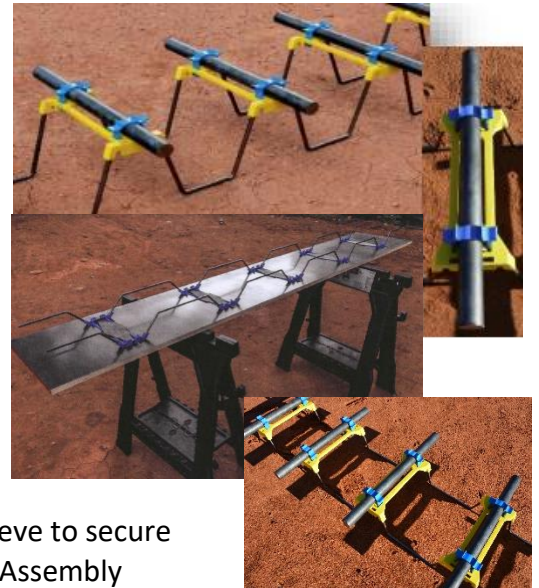


# EZbasket™

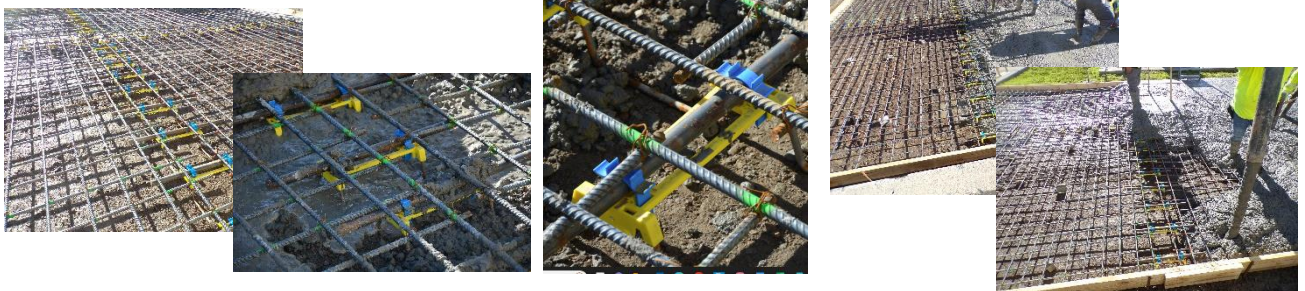
## Installation Instructions Round Dowel

1. Secure the EZ Basket jig onto a platform such as sawhorses or workbench.
2. Place the EZ Basket sleeve in the precut slot in the EZ Basket jig.
3. Insert the tapered dowel into the EZ Basket sleeve.
4. Press the EZ Basket side frame into the end slots on the EZ Basket sleeve.
5. Remove the EZ Basket sleeve and side frame from the EZ basket jig.
6. Rotate the EZ Basket sleeve and side frame 180 degrees and set back onto the EZ Basket jig surface.
7. Place the round dowel into the designed cradles on the EZ Basket sleeve.
8. Insert an EZ Basket pin into each end of the EZ basket sleeve to secure the round dowel to the EZ Basket sleeve and side frame. Assembly complete



### ADDITIONAL INSTALLATION INSTRUCTIONS

- When possible, pin the EZ Basket side frame to the subgrade securely.
- Do not assemble the EZ Basket in temperatures below 45 degrees. Perform the assembly indoors if this occurs.
- US patent numbers - US 11149385, US D922857, and US D922858 apply to the EZ Basket product.



Thank You for your interest in McTech Group!

Website: [www.mctechgroup.com](http://www.mctechgroup.com)